



Undercounter Refrigerators

Service / Warranty: 888-828-5535



MODELS: BERU27R
BERU48R
BERU60R
BERU72R

FEATURES:

- ☑ Stainless Steel Exterior & Interior with reinforced stainless steel top.
- ☑ Environmentally friendly R290 refrigerant
- ☑ Dixell digital controller
- ☑ Maintains Temperatures between 33°F -40°F degrees.
- ☑ Recessed door handle (s)
- ☑ Self-closing door (s) with stay open feature
- ☑ Magnetic Door Gasket(s) standard for positive door seal
- ☑ Pre-installed casters
- ☑ One (1) pre-installed shelf per section

NEMA 5-15P



NEMA
15A/125V

DIMENSIONS:

	Width	Depth	Height	Weight
BERU27R	27 ^{9/16} x	30 x	34 ^{1/8}	171 lbs
BERU48R	48 ^{1/4} x	30 x	34 ^{1/8}	231 lbs
BERU60R	60 ^{1/4} x	30 x	34 ^{1/8}	264 lbs
BERU72R	72 ^{11/16} x	30 x	34 ^{1/8}	315 lbs



• 2 YEAR PARTS AND LABOR WARRANTY • 5 YEAR COMPRESSOR PART WARRANTY

MD. 02/08/2023



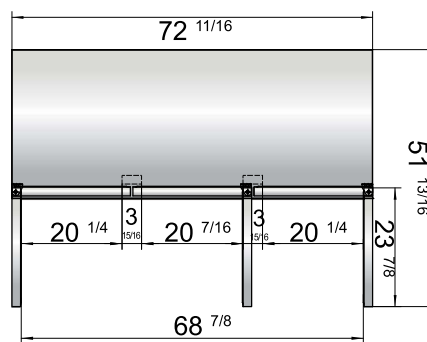
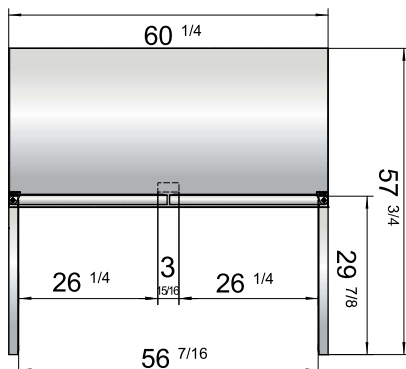
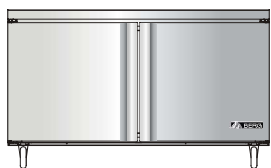
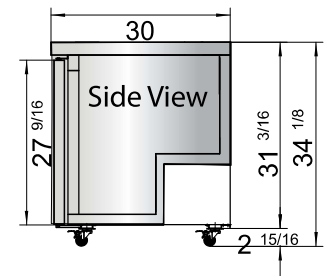
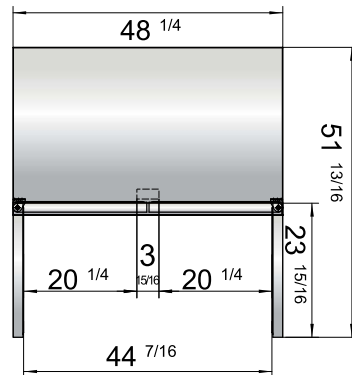
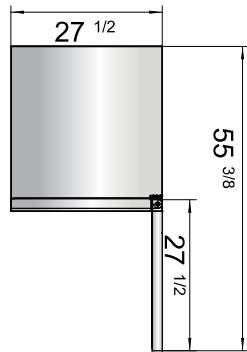
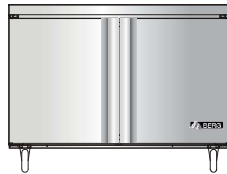
Undercounter Refrigerators

Service / Warranty: 888-828-5535

SPECIFICATIONS

	Doors	Cu.Ft	Shelves	Exterior Dimension (WxDxH)	Casters	Gross Weight (LBS)	HP	Voltage	Amps	Refrigerant
BERU27R	1	7.15	1	27 ⁹ / ₁₆ x 30 x 34 ¹ / ₈	2.5 in.	171 lbs	1/7	115/60/1	2.3	R290
BERU48R	2	13.38	2	48 ¹ / ₄ x 30 x 34 ¹ / ₈	2.5 in.	231 lbs	1/7	115/60/1	2.3	R290
BERU60R	2	17.2	2	60 ¹ / ₄ x 30 x 34 ¹ / ₈	2.5 in.	264 lbs	1/5	115/60/1	2.8	R290
BERU72R	3	21.13	3	72 ¹¹ / ₁₆ x 30 x 34 ¹ / ₈	2.5 in.	315 lbs	1/5	115/60/1	2.8	R290

LINE DRAWINGS



Temperature Control



Epoxy Shelves



Casters



Rear Grate

